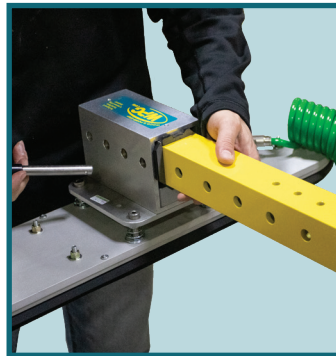
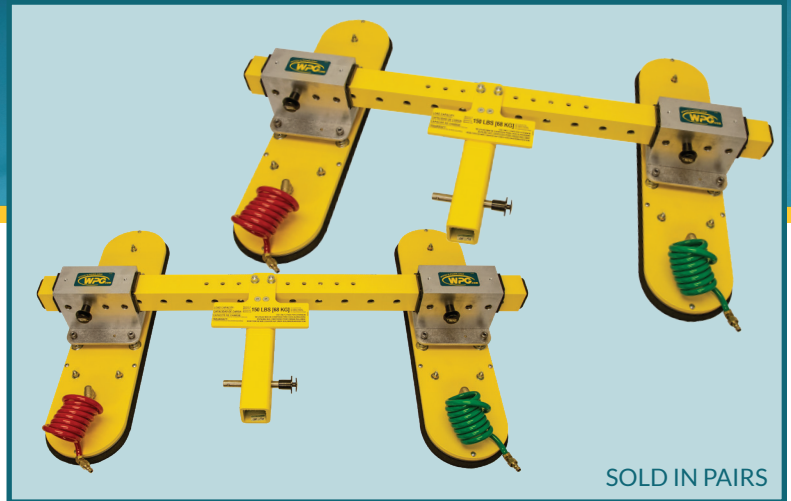


PAD FRAME T-ARM ASSEMBLIES

These pad frame extensions dramatically increase the usefulness and versatility of MRT(A) series lifters by handling insulated metal panels, architectural panels and other textured materials.*



STANDARD FEATURES

Vacuum Pads

- conform to panel contours and surface texture to maintain seal and full lifting capability
- hold panels securely while protecting surfaces from damage
- attach to panel faces, keeping edges free for exact placement
- eliminate slings, drilling or fasteners that can damage panels and slow installation
- feature foam rubber sealing edges that are excellent at resisting UV light, chemicals and solvents
- come in a choice of styles for installing IMP's or multipurpose handling (see AVAILABLE PAD STYLES)

Adjustable Pad Mounts

- easily conform to differences in load width or distance between panel contours
- stay securely in position during load manipulation

T-Shaped Arms

- provide proper support for handling IMP's and other construction materials
- include an adjustable cross bar for precise pad alignment on pad frame

Cotterless Hitch Pins

- allow rapid adjustment of pad mounts for different panel widths and contours
- hold T-Arms securely in place, making tool-free installation fast and easy

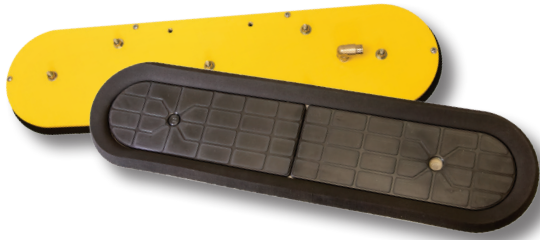
Quick-Connect Hose Fittings

- enable tool-free connection of air hoses from vacuum pads to the vacuum system
- make attaching vacuum pads to the lifter quick and easy

*Available for MRT4-DC3, MRTA8-DC3 and MRTALP8-DC3 Models. Two T-Arms are required for each lifter, to keep the load balanced.

AVAILABLE PAD STYLES

VPFS625 VACUUM PADS**



6-1/2" x 25-1/2" [17 cm x 65 cm] narrow oval
with replaceable sealing insert

VPFS10T VACUUM PADS

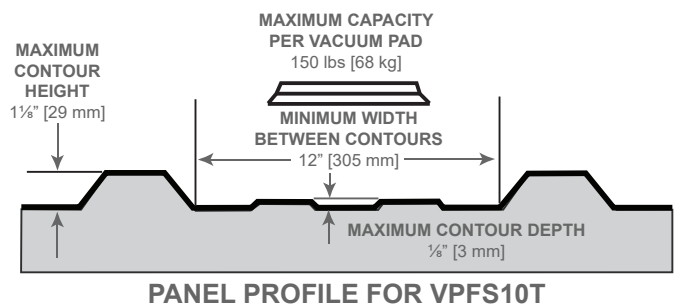
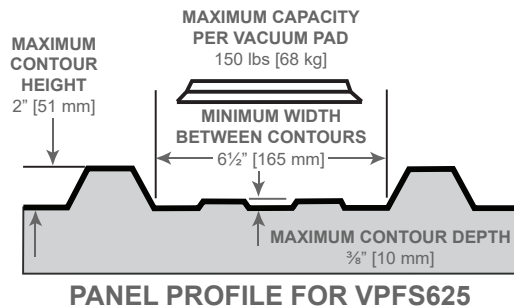


10" [25 cm] diameter
with easy-to-replace sealing rings

- Designed specifically for IMP's, cold-storage panels and other cladding
- Ideally suited for handling panel contours with high ribs or standing seams (see COMPATIBLE CONTOURS)
- Flexible sealing edges adhere tightly to ribbed or textured panel surfaces
- Narrow shape fits between large contours, while foam rubber conforms to small contours
- Replaceable sealing inserts enable restoration of worn or damaged pads

- Designed specifically for textured materials, including architectural panels, stone and more
- Capable of handling panel contours with moderately sized ribs and texture (see COMPATIBLE CONTOURS)
- Sealing rings come in both low-marking, heat-resistant rubber for superior durability and foam rubber for maximum flexibility
- Sealing rings can be quickly removed and replaced if they become worn or damaged

COMPATIBLE CONTOURS



**Not suitable for single-skin metal panels.



Based on product information at time of publication.

Environmental conditions can affect product performance and longevity; consult the product instructions on WPG.com or contact a Technical Sales Representative for more information.