

QUADRA-TILT ROTATORS 200 & 300

MODELS: MRTA4LP6FACS &
 MRTA6LP6FAC

An array of pad-positioning options make these lifters ideal for handling windows of various shapes and sizes.

Movable Pad Arms

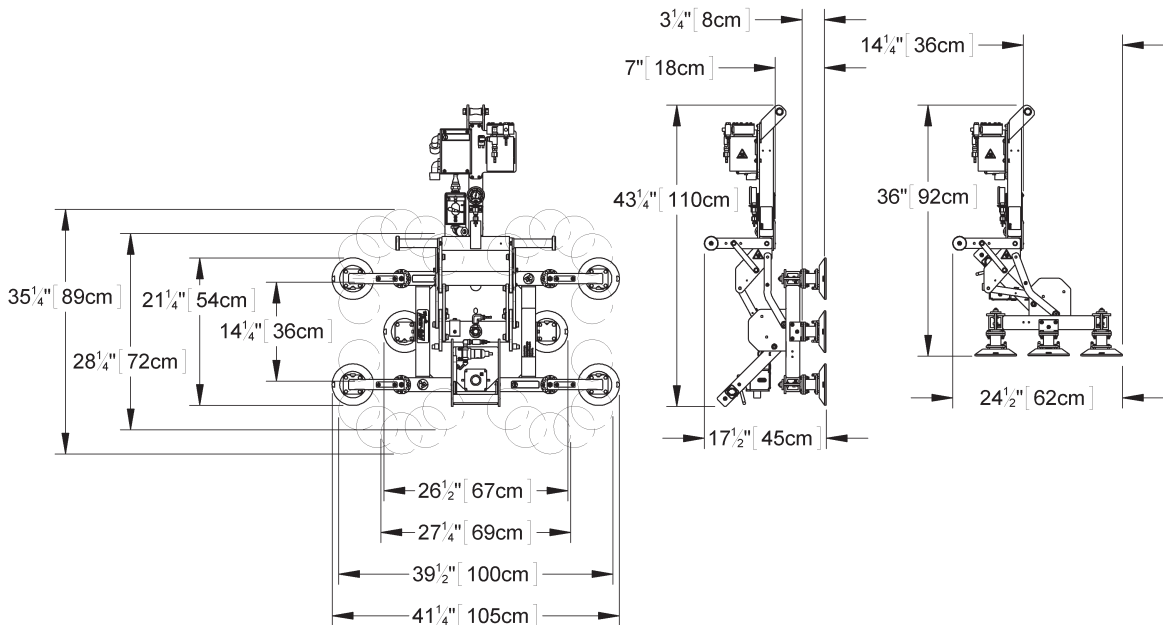
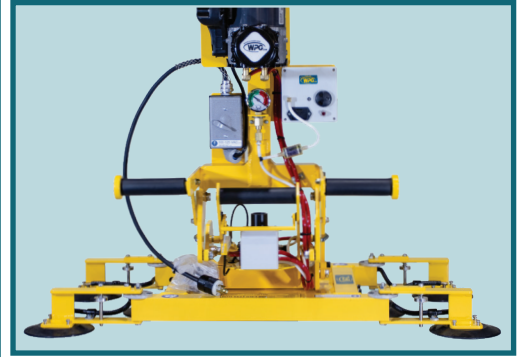
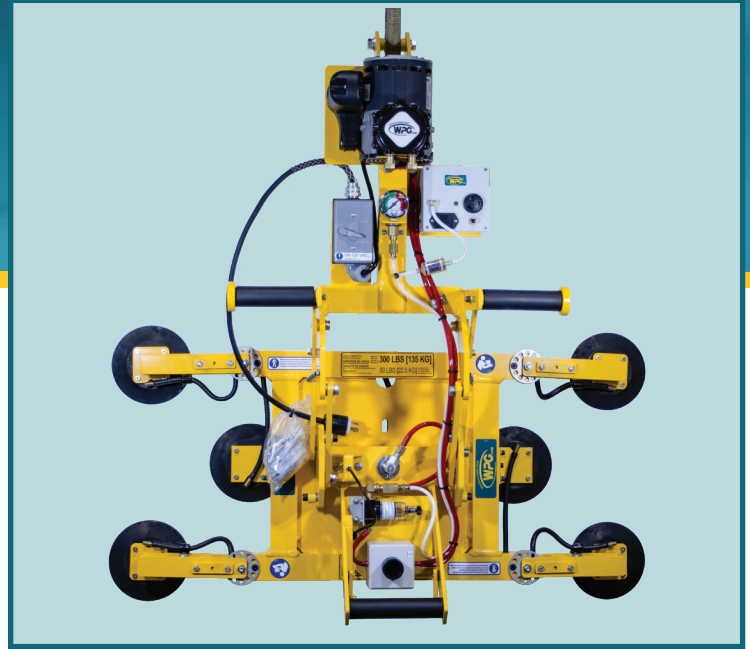
Offer a wide range of adjustability for maximizing load support and minimizing load overhang.

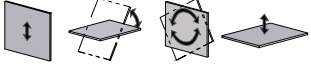
Quadra-Tilt Design

Enables an operator to move loads between upright and flat positions with less effort.

Light Weight

Makes this compact lifter easy to handle.



Models	MRTA4LP6FACS	MRTA6LP6FAC
Maximum Load Capacity	200 lbs [90 kg]	300 lbs [135 kg]
Number / Size of Pads	4 / 6" [15 cm] diameter	6 / 6" [15 cm] diameter
Attach/ Release Time	2 seconds/ 1 second (approximately)	3 seconds/ 2 seconds (approximately)
Load Movement	Manual rotation, 360° edgewise, with locking at each 1/4 turn Assisted manual tilt, 90° between upright and flat	
Standard Operating Power	120 volts AC, 60 hertz, 5 amps (Other voltages available)	
Adjustable Pad Spread	Length: Min: 26-1/2" [67 cm], Max: 41-1/4" [105 cm] Width: Min: 14-1/4" [36 cm], Max: 35-1/4" [89 cm]	
Lifter Weight	71 lbs [33 kg]	

STANDARD FEATURES

Vacuum Gauge

Features green and red zones to clearly indicate whether vacuum level is sufficient for lifting

Vacuum Line Filter

Protects the vacuum generating system from contaminants

Spring-Mounted Vacuum Pads

Automatically adjust to match the angle of load surfaces, easing attachment

Movable Pad Arms

Adjust quickly and easily to accommodate many different window sizes and shapes, or to avoid sink holes in counter tops (see illustration for details)

Multiple Control Handles

Provide a choice of different operator positions for optimal ergonomics and efficiency

Twist-Lock Electrical Plug

Provides a secure connection to the AC power source, to prevent accidental disconnection

Blow-Off Release

Reverses airflow to quickly separate vacuum pads from loads, without after-stick

AVAILABLE OPTIONS

DC Power System (97445AS, 97456AS)

Enables lifter to operate anywhere on job sites or in multiple shop locations, avoiding the inconvenience of power cords or hoses (Specifications may not be as listed. Please contact us for more information.)

Air (Venturi) Power System (97446AR, 97457AR)

Enables lifter to operate using compressed air supply already available in many production facilities (Specifications may not be as listed. Please contact us for more information.)

Vacuum Loss Warning Buzzer (93780BM)

Uses advanced logic circuitry to monitor vacuum level and sound an alarm only when insufficient vacuum could be hazardous

Voltage Adaptation

Enables lifters to operate using AC voltages best suited to specific uses and geographical areas

2" (5 cm) Pad Spacers (97461)

Enable lifter to handle windows with mullions or other loads with surface obstructions

Alternative Pad Compounds

Specially designed for heat resistance, marking resistance, coated surfaces and other purposes

Alternative Pad Frame Dimensions and Configurations

Enable lifter to handle additional load sizes and shapes

DESIGN STANDARDS

ASME B30.20 (BTH-1 Design Category "B", Service Class "0"): Industry standards established by the American Society of Mechanical Engineers (ASME) and published by the American National Standards Institute (ANSI)

Based on product information at time of publication. Environmental conditions can affect product performance and longevity; consult the product instructions on WPG.com or contact a Technical Sales Representative for more information.

Wood's Powr-Grip products are sold through authorized dealers.